

## ***WHAT'S CAUSING OUR POLLUTION?***

### **Construction**

- ✓ Contractors disposing of concrete washout in storm drains or drainage ditches.
- ✓ Sediment washing into gutters and streets from job sites.

### **Around the House**

- ✓ Cleaning brushes or rinsing paint containers into the gutter.
- ✓ Homeowners over-fertilizing lawns or using pesticides and herbicides improperly.
- ✓ Car washing in the driveway or street.
- Pouring cooking grease and oils down stormdrains.

### **Motor Vehicles**

- Vehicles leaking oil and gas onto the streets.
- Spills of oil and fuel during maintenance and refueling.
- Cracked batteries.
- Improper disposal of antifreeze and old tires and batteries.
- Off-road vehicles tracking mud onto paved streets.



**Remember,  
ONLY rain and snow go  
into storm drains.**

**Working together, we  
can make a difference!**

**To report a spill  
CALL 911  
(Tell the operator you are  
on Fort Carson)**



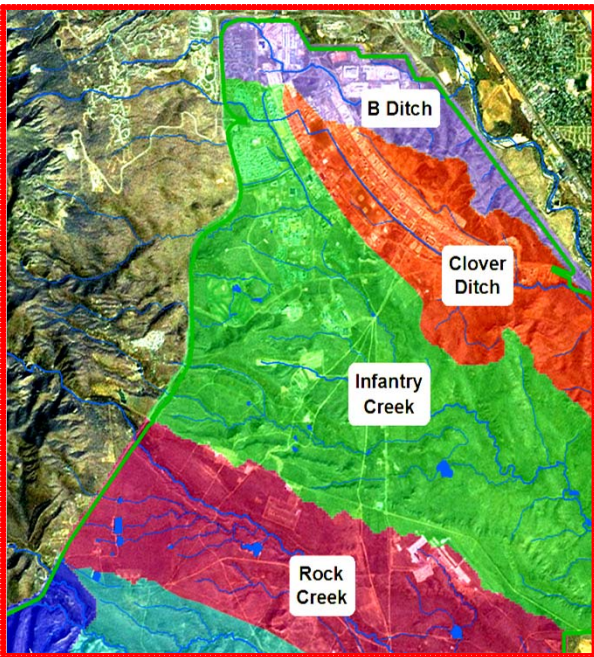
# Keep OUR Streams Clean!



**Fort Carson Stormwater  
Program 719-526-1697**

[http://www.carson.army.mil/DPW/  
environmental/stormwater/index.html](http://www.carson.army.mil/DPW/environmental/stormwater/index.html)

At Fort Carson, the sanitary sewer system (wastewater) and the storm drain system (stormwater) are two separate systems. Inlets to the storm drain system are typically located outside along the gutters and streets. Rainwater and snowmelt (stormwater) that enters a storm drain inlet flows directly to our creeks and ditches, and eventually discharges into Fountain Creek, east of Fort Carson.



To report the release of ANY contaminant into the environment, call, 526-1697

Mud, oil, soap and trash that is tracked, spilled, poured or dumped, onto our streets and parking lots gets picked up by stormwater and can enter the storm drain system. Natural areas also contribute sediment (mud) through the process of erosion. This pollution then flows untreated into our creeks and ditches, causing adverse impacts to water quality. Aquatic life struggles to survive, and drinking water for people downstream is harder to purify.



**Did you know – ONE quart of oil can contaminate over 250,000 gallons of water?**

\*\*\*\*\*

To keep our streams clean, it is important that **ONLY** stormwater goes into storm drains. Discharges of fuels, cooking oil, mud, debris and trash should be prevented!

**HOW YOU CAN HELP** ????

- ✓ Wash your car at the car wash (the water is usually recycled). If you do wash the car at home, chose a non-toxic, phosphate-free or biodegradable soap. If possible, wash the car on a grassy area, so the soapy water will soak into the ground and not go into the storm drains.
- ✓ Avoid off-road vehicle use.
- ✓ Don't rinse oil spills with water. Apply cat litter or other dry absorbent material, sweep it up and dispose of it in the trash.
- ✓ Follow directions on pesticides, herbicides and fertilizers. Do not apply if rain is expected within 48 hours.
- ✓ Do not rake or blow leaves into the storm drains – bag them.
- ✓ Use water-based, biodegradable cleaning products.
- ✓ **DON'T LITTER – RECYCLE!**
- ✓ To dispose of old paint, pesticides and other household hazardous waste, contact the El Paso County Hazardous Household Waste Facility at 520-7879

